



































DEUTSCHLAND  
2006

Berlin

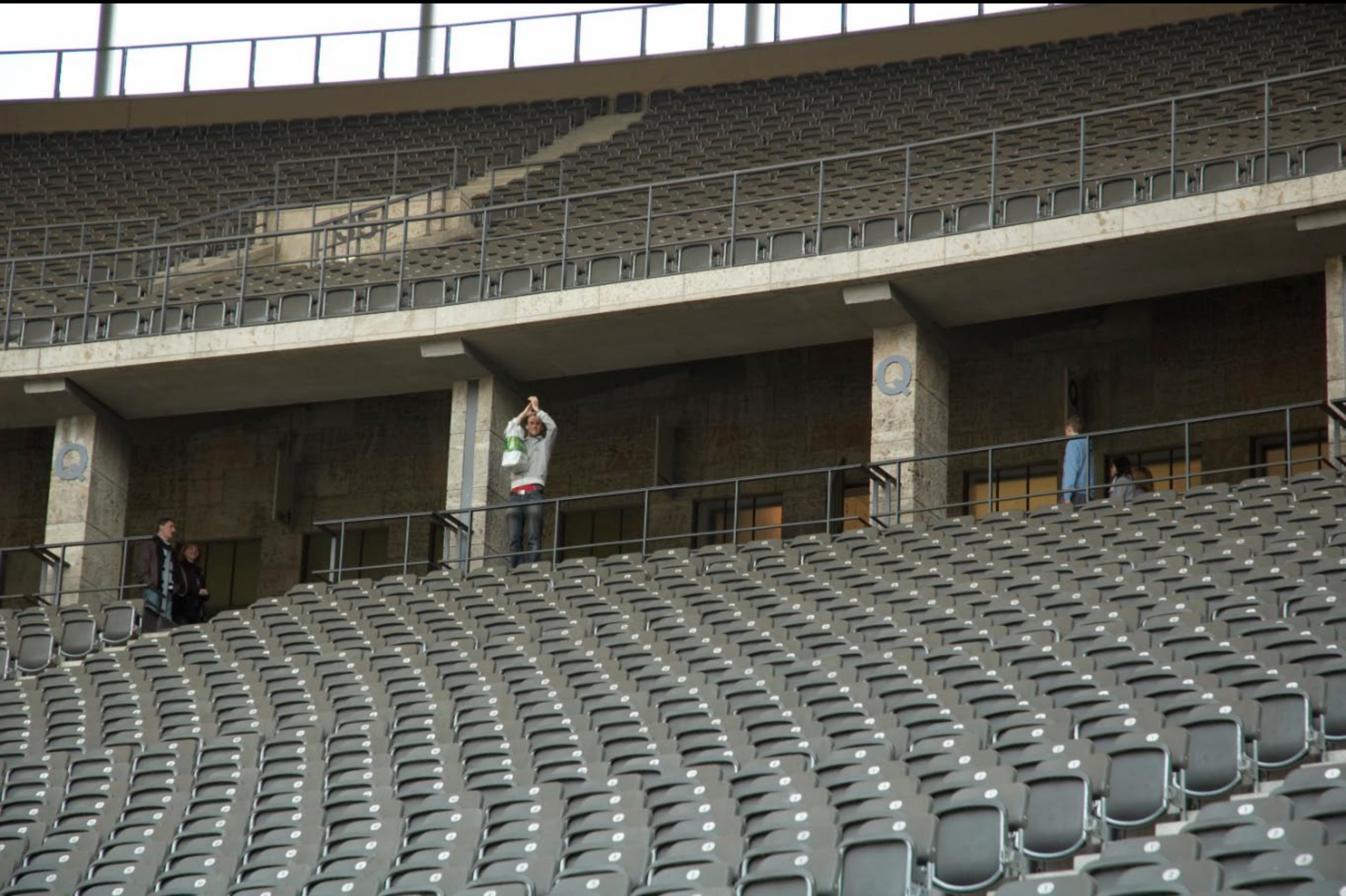
FIFA WM-STADT

R216



















Ausgang  
EXIT



Ausgang



25

WC

10-24

10-22



























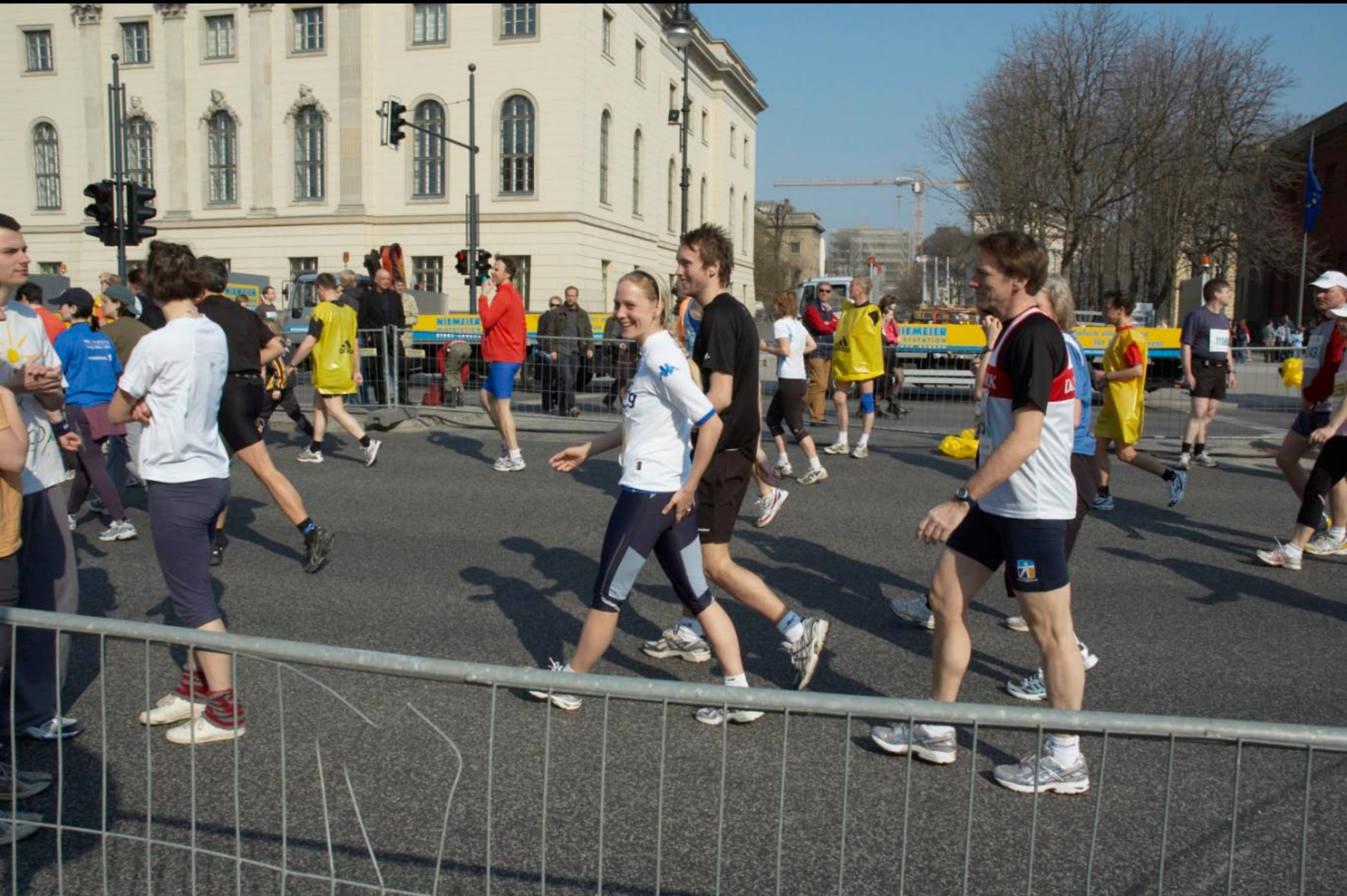




















BAHNHOF POTSDAMER PLATZ

BAHNHOF POTSDAMER PLATZ

„Die Show Sensation!“

F1783

100

10675

9077

10406

F4642

CrefoConsult

22. Berliner Halbmarathon

ENERGIE FÜR BERLIN





































27. Berliner  
Halbmarathon  
1. April 2007

WATTENFALL

21,0975 km

Kindl









Kappa

Carlsberg

ille  
ba



Jagtvej

2350m

700m



SÜNDIKAT

BÜCHER















Zanderfilet  
mit Aschem Spargel  
& Hollandaise  
und neuen Kartoffeln  
15,-

















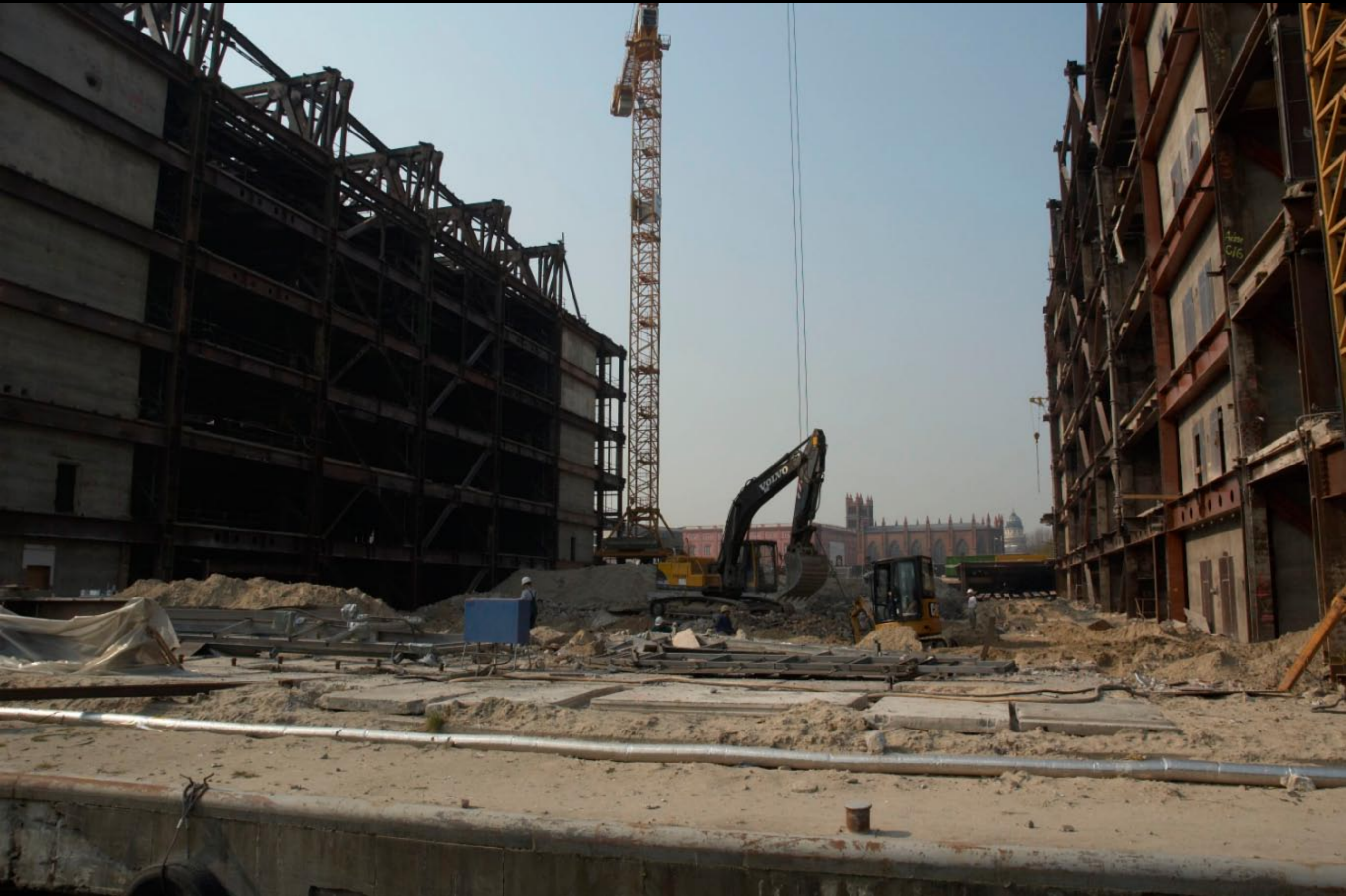




1 Stunde  
ne Berlin  
2.30 und 13.00 Uhr  
16.00 und 17.00 Uhr  
30 / 424 84 06 o. 030 / 43 67 11 35



























Wir sind auf  
BEWEGUNG

**Abstimmen für  
50.000 Arbeitsplätze**

Durch eine beschleunigte Öffnung des Sportwettenspiels

Wenigstens 1000  
www.sportwetten.de



















A modern, multi-story building with a glass facade and a curved roof. The building is situated on a concrete pier over water. The facade is composed of a grid of dark frames holding large glass panels. On the upper left corner of the building, there are two red 'DB' logos. The building is connected to the pier by a bridge structure.

DB DB

A large, curved glass structure with a semi-circular roof, located in the background. It appears to be a covered walkway or a large entrance area. The structure is made of a grid of dark frames holding large glass panels. A few people are visible walking on the structure.

A bridge structure that spans across the water, connecting the building to the pier. The bridge has a dark, solid top surface and a metal railing. It is supported by a concrete pier on the right side.

A concrete pier that extends into the water. The pier is made of light-colored concrete blocks. It has a metal railing along the edge. A few people are visible sitting on the pier.

The water in the foreground is dark blue and slightly rippled. It is contained within a concrete structure that forms a pier or a dock. The water is calm, and there are no boats or other objects visible in the water.

























































Chris Guiffy  
† 3.2.1989

Wolf Diet Brunner  
† März 1903

Justi Hebeland  
† 23.1962

And. Heilmann  
† 1.1.1902

Philipp Heil  
† 10.4.1902

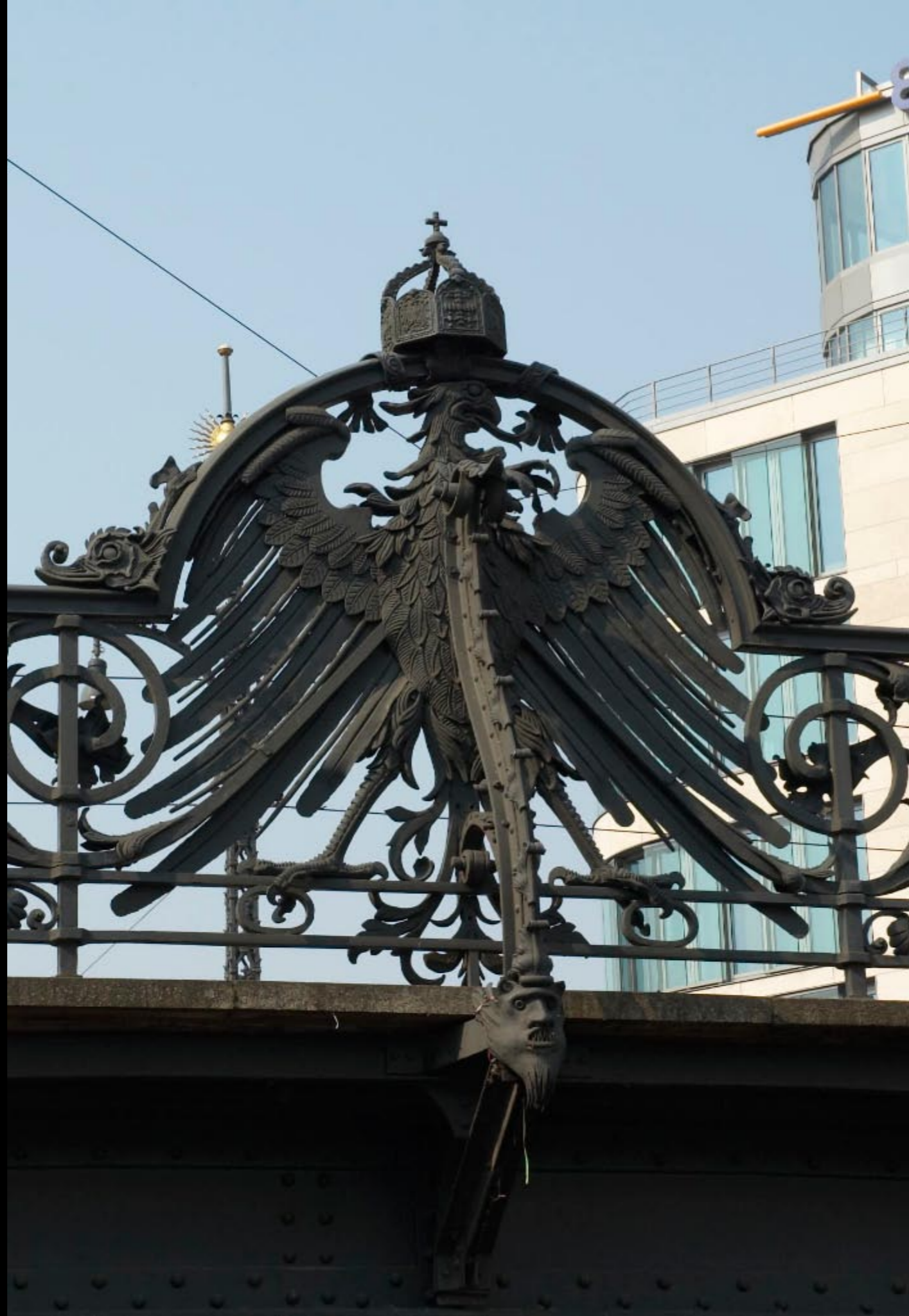
Walter Heil  
† 14.11.1907

Heil Heil  
† 10.12.1907

























DER DEUTSCHEN KUNST MDCCLXXI

10 Jahre Bildungspolitische Expertenforum  
NEULAND  
2011  
BERLIN UM 1800

Alte Nationalgalerie





SCIENTIAE ET ARTIVM LIBERALIVM MVS



















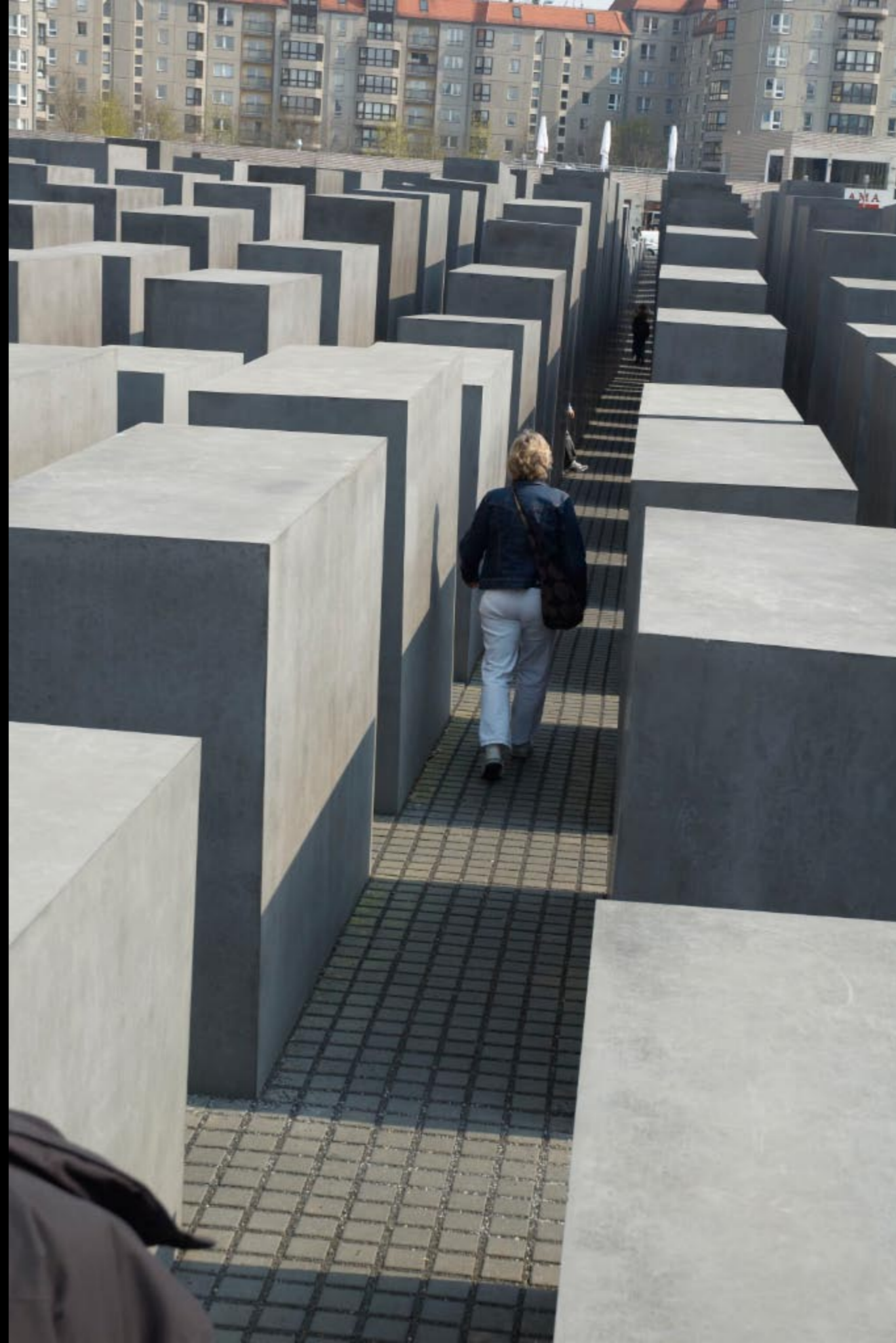




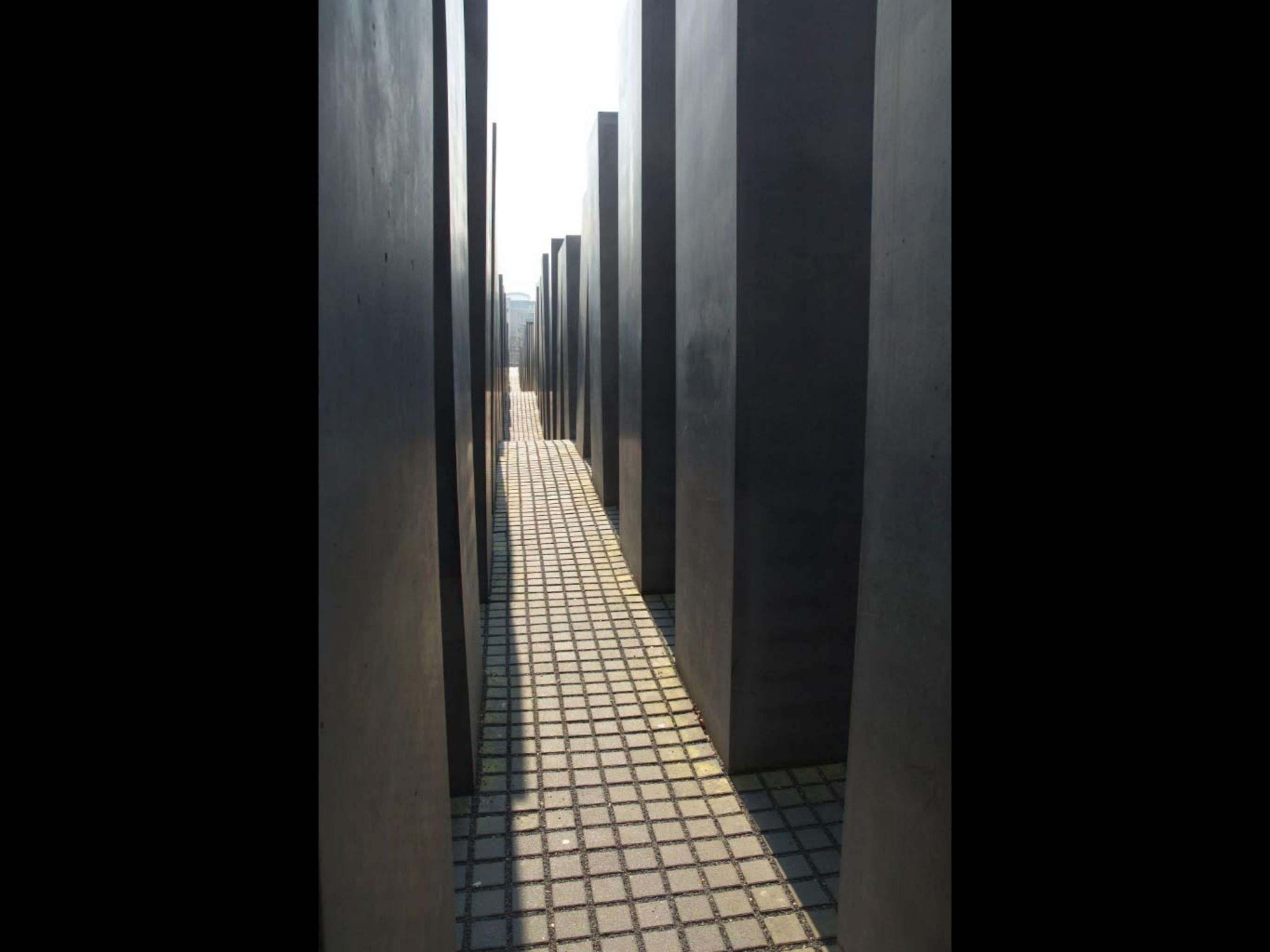
































































Weyers.  
Cafe - RESTAURANT

CAFE

RESTAURANT

RESTAURANT

Weyers

Pfalzbu

T







BOULANGERIE

AUX DELICES NORMANDS

AUX DELICES NORMANDS

Chalkboard menu with handwritten text, including "Pain", "Croissant", and "Cadeaux".



25

B1HF 730

HS 2812









SOLO

Handge-  
branntes  
Liquor  
5,-

Handge-  
branntes  
Liquor  
5,-

FOCO LOCO  
Jeden Sonntag  
9-15  
Brunch 5,-  
ab 17  
all you can eat  
Fajitas 3,95

BFAU 9979





PIZZA FACTORY PASTA & SALAT

PIZZA FACTORY



Kleine Helden

Kleine Helden



S 125  
L 21  
7A

















































